

## COLD PIPE INSULATION SPRAY

Provides a moisture barrier to stop sweating and dripping from:

- Refrigeration Lines
- Air Conditioning Lines
- Cold Water Lines
- Other Cold Surfaces

### Description

Pipe-Dri is an aerosol insulation which provides a moisture barrier to stop sweating and dripping on refrigeration lines, air conditioning lines, and other cold surfaces. Quickly adheres and dries to a hard water proof coating. Pipe-Dri's spray pattern permits spraying of odd shaped fittings and makes it possible to insulate hard to reach areas.

### Application

This product is ideal for providing a moisture barrier for refrigeration and air conditioning lines, and cold water pipes, etc. Sweating and dripping are eliminated by this durable, waterproof protective barrier. It separates the warm moist air and the cold surface, preventing condensation from occurring. Pipe-Dri offers the ability to apply on odd shaped fittings and hard to reach areas. Reapplication will continue to build thickness as required. One can will normally cover approximately ten feet of one inch water pipe or eight square feet of flat surface area with two coats.

Ideally, the product should be at room temperature (70-75°F) and the surface to be coated at a lower temperature. A thick application is hard to form on warmer surfaces (above 80°F); however, a thicker coat may be achieved by applying 2 or more light coats. Once a coating has been allowed to dry and harden, it will be stable at temperatures up to 120°F.

**Do not use on plastics or painted surfaces.**

### Aerosol Products

## Pipe-Dri™



### Directions for Use

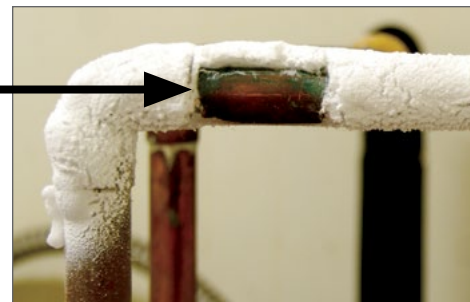
1. Wipe excess dirt and moisture from surface to be sprayed.
  2. Shake can well and remove protective cap.
  3. Hold can upright about 12 inches from surface with valve opening pointed away. Apply a thin first coat.
  4. Allow to dry (5 to 10 minutes); if second coat is needed, reapply from a distance of 6-10 inches.
  5. Invert can and spray for 1-2 seconds to clean nozzle.
- NOTE: Product is designed for cold piping systems only.

### Packaging

14 ounce can

4297-76

Pipe-Dri forms a thick coating of insulation.



Read and understand the product's label and Safety Data Sheet ("SDS") for precautionary and first aid information.

The SDS is available on the Nu-Calgon website at [www.nucalgon.com](http://www.nucalgon.com).

